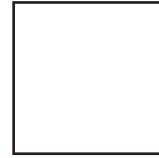
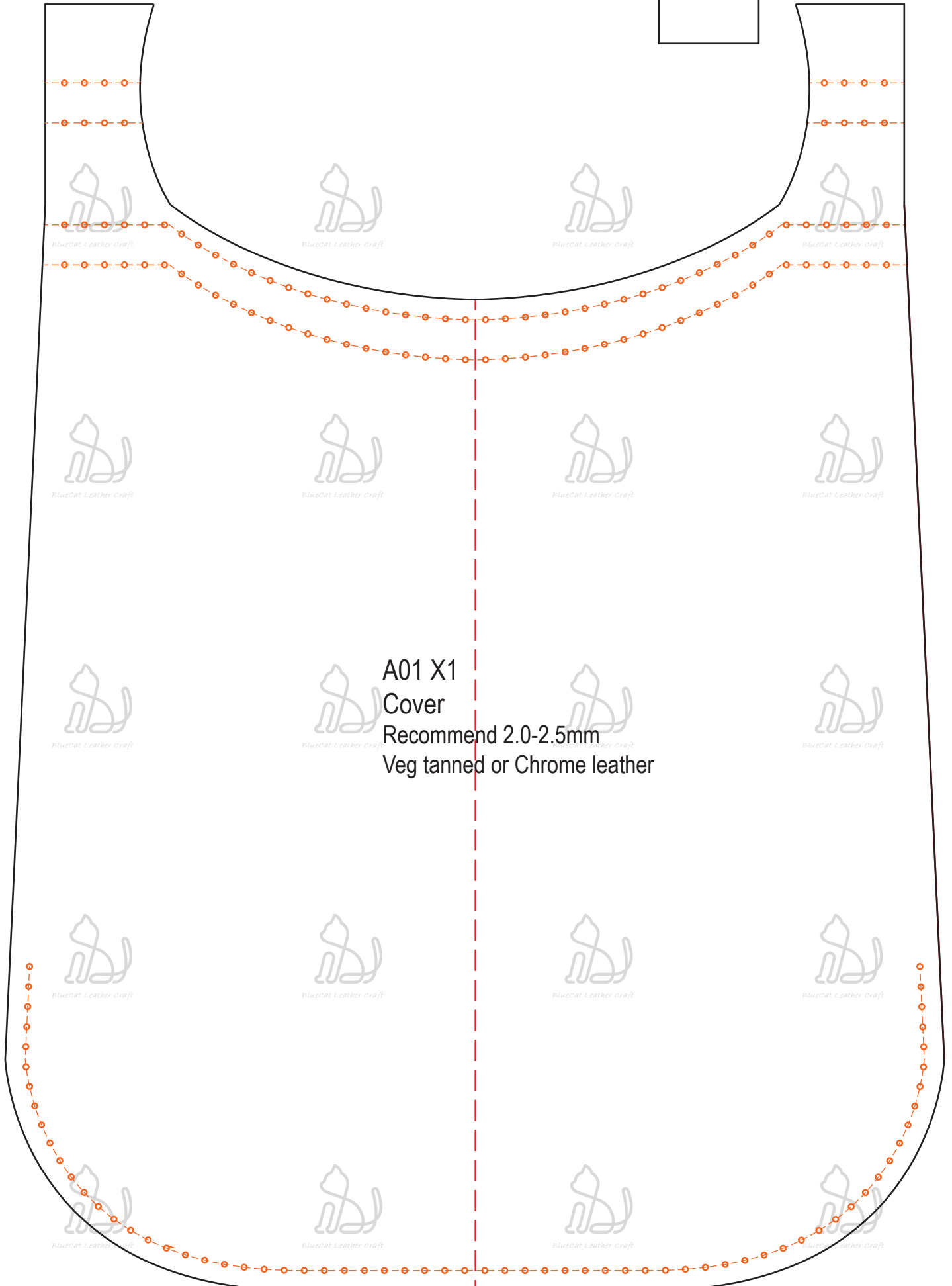


20mm



BlueCat Leather Craft



A01 X1

Cover

Recommend 2.0-2.5mm

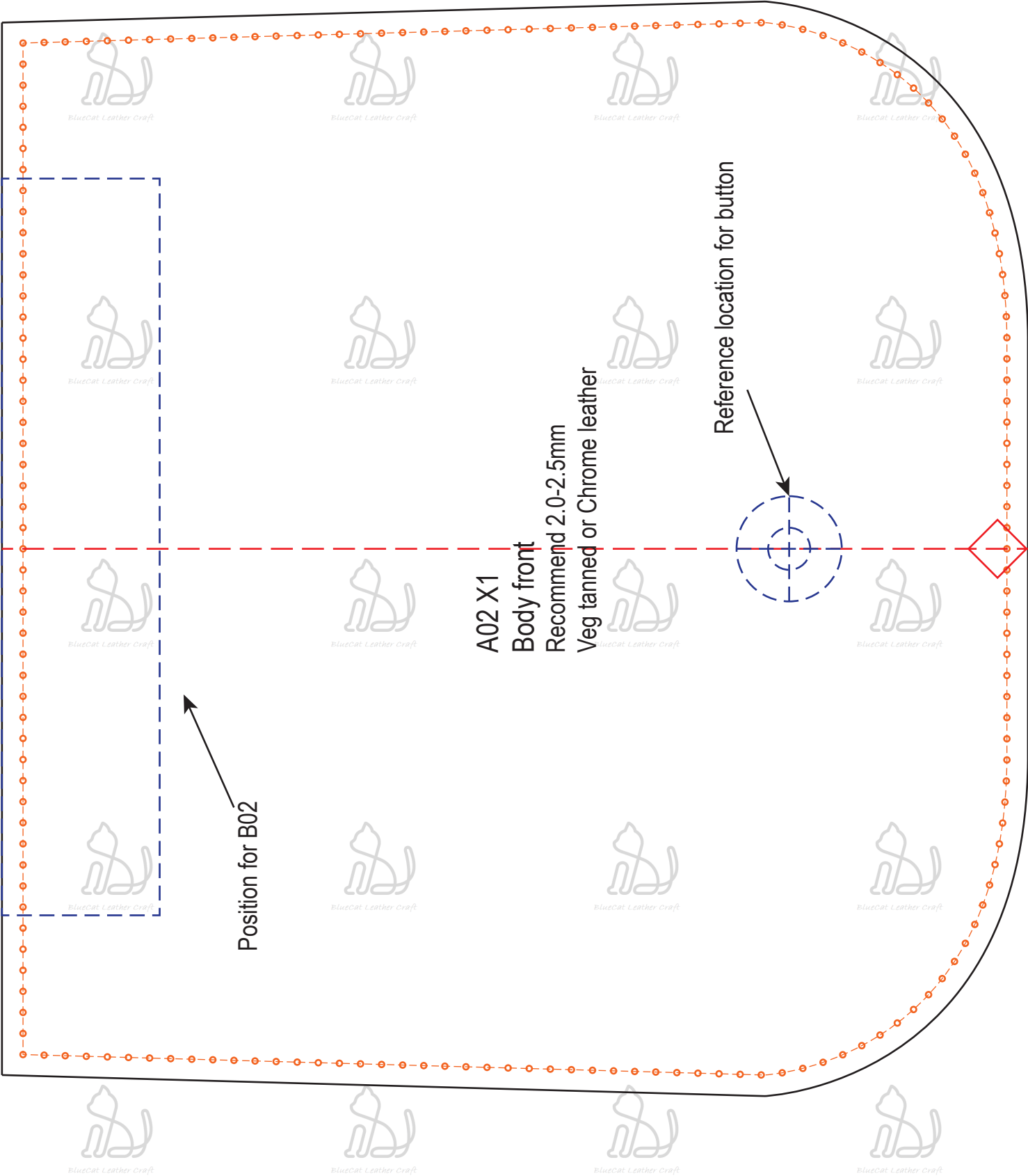
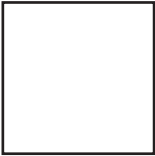
Veg tanned or Chrome leather

Line description:

- Solid line : For boundaries/borders of the material
- Dash line : Positioning line
- Dash line with dots : Stitching line.
- Hole/Button Position Signage

Size: 208\*232\*60mm  
Leather: Recommend 2.0-2.5mm  
Veg Tanned or chrome leather

20mm



## Line description:

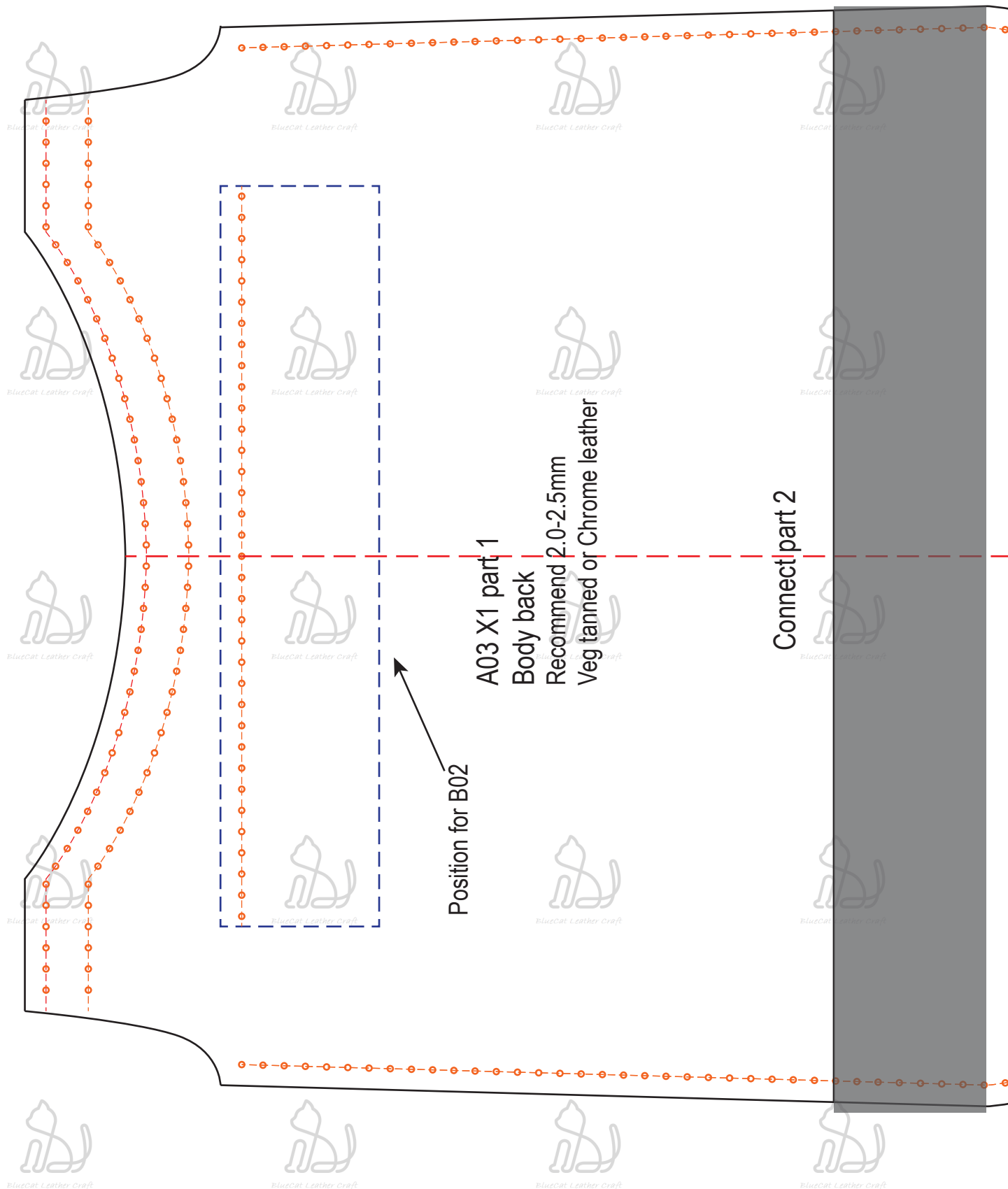
- Solid line : For boundaries/borders of the material
- - - Dash line : Positioning line
- . - . - Dash line with dots : Stitching line.
- 🌀 Hole/Button Position Signage

Size: 208\*232\*60mm  
Leather: Recommend 2.0-2.5mm  
Veg Tanned or chrome leather

20mm



BlueCat Leather Craft



Position for B02

A03 X1 part 1

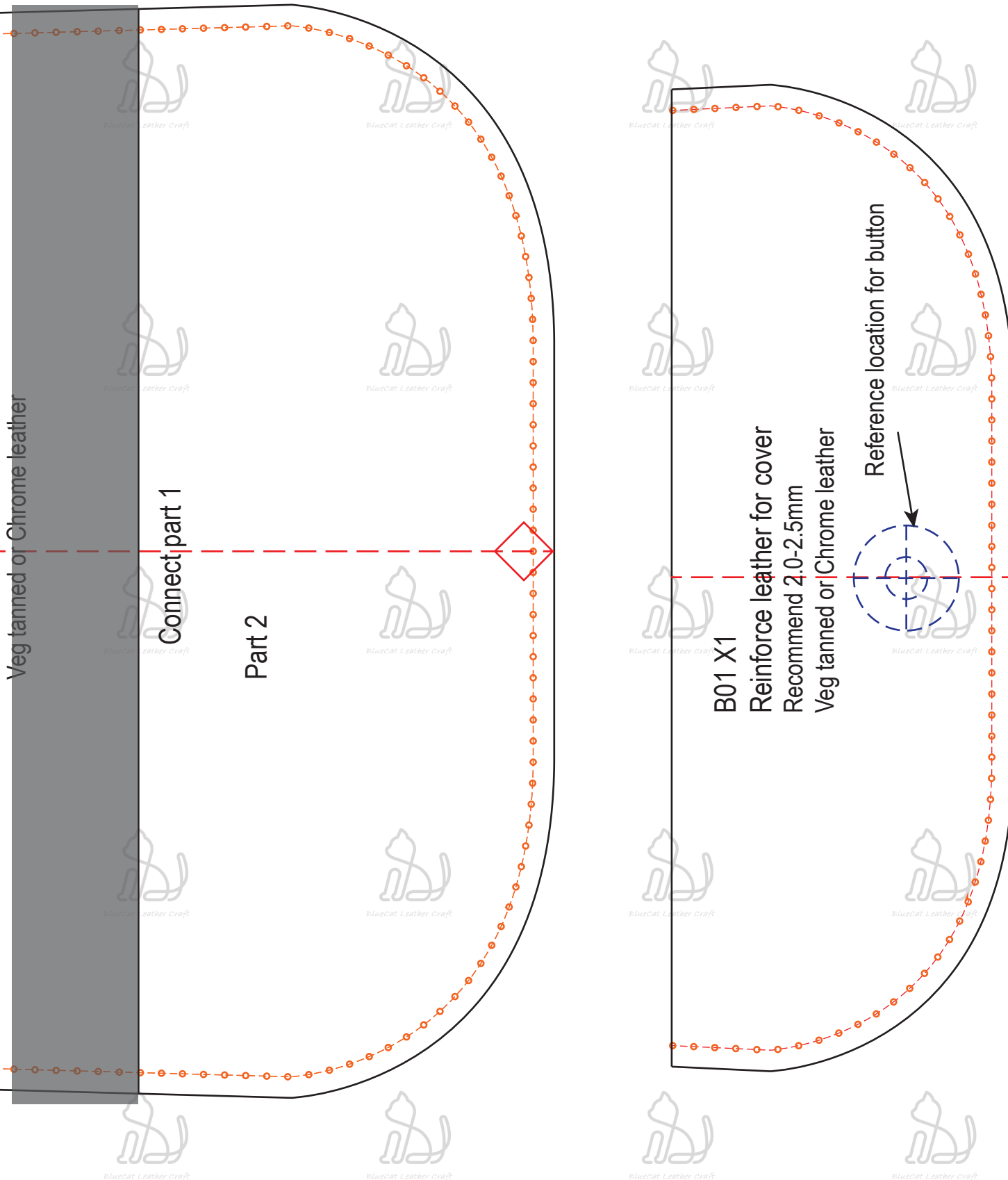
Body back

Recommend 2.0-2.5mm

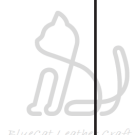
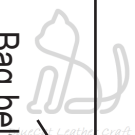
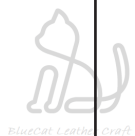
Veg tanned or Chrome leather

Connect part 2

20mm



Bag belt, you can decide the length of it.



A04 X1 part1  
Side

Recommend 2.0-2.5mm  
Veg tanned or Chrome leather

Connect part2



A04 X1 part2  
Side

Connect part1

